



Experience the New Generation of Gigabit Smart Managed Switches

The NETGEAR® new generation of Gigabit Smart Managed Switches offers new, powerful L2+/Layer 3 Lite features with enhanced performance and usability. They are purposely designed for the future where increased traffic and application-oriented tasks demands more intelligence at the edge, higher reliability and improved network efficiency on top of operational cost savings and ease of management.

There are three products in this series: a 16-port, a 24-port, and a 48-port Gigabit Ethernet Smart Managed Switch.

The GS716T and GS724T come with 2 dedicated Gigabit SFP ports for fiber connectivity while the GS748T comes with 2 dedicated Gigabit SFP and 2 combo copper/SFP ports, all with increased number of simultaneously connected ports.

This new generation of Gigabit Smart Managed Switch from NETGEAR is the optimized solution providing the best value at an affordable SMB price point.

Highlights

Designed for Converged Network, Big or Small

- Gigabit Speed with non-blocking architecture supporting 100% Gigabit throughput
- Auto Voice VLAN for fast and reliable deployment of VoIP
- Auto Video VLAN, following the same concept of Auto Voice, help speed up your deployment of IP-based surveillance system
- Static routing, helps to route internal traffic for more efficient use of network resources

- IGMP and MLD snooping, providing advanced multicast filtering

Build a Future-proof Network with NETGEAR

- Solid performance with non-blocking architecture, 16K MAC addresses, 256 VLANs, 100 shared ACL entries, 32 static routes, and 512 Multicast Groups
- Comprehensive IPv6 supporting management, QoS and ACL, ensuring investment protection and a smooth migration to IPv6-based network

- Dedicated SFPs instead of combo ports, offering more connectivity ports and providing better value and usability at no extra cost
- Energy Efficient Ethernet (IEEE802.3az) support for more energy saving in the future when more EEE-compliant end devices come to market
- Advanced QoS with IPv4/IPv6 ingress traffic filtering and prioritization

A New Generation of Gigabit Smart Managed Switches

- Dynamic VLAN assignment for easy user authentication and location-independent access to network
- Multicast VLAN Registration for eliminating unnecessary multicast traffic and improve the efficiency of network utilization

Network Development Made Easy

- Auto Voice VLAN for easy development of VoIP
- Auto Video for simple deployment of IP Surveillance
- ACL Wizard for a guided tour to set up your network access control

- Smart Control Center, a powerful tool for multi-switch discovery, deployment, monitoring and firmware upgrade
- Network Management System (NMS300), allowing all NETGEAR business products to be deployed and managed through this single management interface

Small IT, not Big IT

- Easy to manage via web-Based Management GUI or Smart Control Center for multi-switch deployment

- Standard-based technology, ensuring interoperability with any standard-based devices in the existing network
- Dual firmware images, improving reliability and uptime to your network
- Worry-free with NETGEAR Limited Lifetime Hardware Warranty*
- Assist with customer deployment with 1-year Free 24x7 Advanced Technical Support*



Hardware at a Glance

Model Name	Form-Factor	FRONT		REAR	
		10/100/1000Base-T RJ45 ports	100/1000X Fiber SFP ports	Power Supply	Fans
GS716Tv3	Rack mount	16	2 (Dedicated)	Internal	No
GS724Tv4	Rack mount	24	2 (Dedicated)	Internal	No
GS748Tv5	Rack mount	48	2 (Dedicated) + 2 (Combo)	Internal	1



GS716Tv3: 16-port 1000base-T Gigabit Smart Managed Switch

- 16 Gigabit copper ports
- 2 dedicated SFP ports
- Fanless



GS724Tv4: 24-port 1000base-T Gigabit Smart Managed Switch

- 24 Gigabit copper ports
- 2 dedicated SFP ports
- Fanless



GS748Tv5: 48-port 1000base-T Gigabit Smart Managed Switch

- 48 Gigabit copper ports
- 2 dedicated SFP ports and 2 combo copper/SFP ports

Software at a Glance

Management	IPv4 / IPv6 Multicast filtering	Auto-VoIP	EEE (802.3az) Auto-EEE	VLANs	Convergence
Web GUI: HTTPs; RMON SNMP	IGMP and MLD Snooping	Yes	Yes	Static, Voice Video, MAC, Protocol-based	LLDP-MED, RADIUS, 802.1X

Performance at a Glance

Model Name	Packet buffer	ACLs	MAC address table VLANs Multicast Group	Fabric	Static Routes IP interfaces
GS716Tv3 GS724Tv4 GS748Tv5	2Mb	100 shared ACLs (MAC, IP4 and IPv6)	16K MAC 256 VLANs 512 Multicast Groups	all models line-rate	32 static routes IPv4

Features and Benefits

Hardware Features	
Dedicated SFP Fiber Uplinks	Dedicated SFP ports provides fiber uplinks without sacrificing any down-link Gigabit port. Up to 4 SFP ports provide not only redundant uplinks, but can also build dual redundancy by a trunked uplink with link aggregation and failover, the dual-redundancy, a powerful design for the network virtualization
Fanless Design (GS716T and GS724T)	Quiet operation makes these switches ideal solution for business environments which favor no noise from networking gears such as libraries, class rooms, offices and etc.
Energy Efficient Ethernet (IEEE802.3az)	Maximum power reduction for ongoing operational cost savings
Software Features	
Dynamic VLAN Assignment	IP phones and PCs can authenticate on the same port but under different VLAN assignment policies. Users are free to move around and enjoy the same level of network access regardless of their physical location in the network
Static Routing	A simple way to provide segmentation of the network with internal routing through the switch - reserving the router for external traffic routing only, making the entire network more efficient
Comprehensive IPv6 Support for Management, ACL and QoS	Build current network with future in mind. Ensure investment protection and a smooth migration to IPv6-based network without switch replacement
IGMP Snooping and MLD Snooping	Facilitate fast receiver joins and leaves for multicast streams. Save cost and improve network efficiency by ensuring multicast traffic only reaches designated receivers without the need of an extra multicast router.
Robust Security Features: <ul style="list-style-type: none"> • 802.1x authentication • DHCP Snooping • Port-based security by locked MAC • ACL filtering to permit or deny traffic based on MAC and IP addresses 	Build a secured, converged network with all types of traffic by preventing external attacks and blocking malware while allowing secure access for authorized users
Auto Voice and Auto Video	Automatic Voice over IP prioritization with Auto-VoIP simplifies most complex multi-vendor IP telephones deployments either based on protocols (SIP, H323 and SCCP) or on OUI bytes (default database and user-based OUIs) in the phone source MAC address; providing the best class of service to VoIP streams (both data and signaling) over other ordinary traffic by classifying traffic, and enabling correct egress queue configuration. When deployed IP phones are LLDP-MED compliant, the Voice VLAN will use LLDP-MED to pass on the VLAN ID, 802.1P priority and DSCP values to the IP phones, accelerating convergent deployments
Comprehensive QoS Features: <ul style="list-style-type: none"> • Port-based or 802.1p-based prioritization • Layer 3-based (DSCP) prioritization • Port-based ingress and egress rate limiting 	Advanced controls for optimized network performance and better delivery of mission-critical traffic such as voice and video
DHCP Snooping	Ensure IP address allocation integrity by allowing only clients with specific IP/MAC addresses to have access to the network
Dual Firmware Images and Configuration Files	Dual firmware image and dual configuration file for transparent firmware updates/configuration changes with minimum service interruption

Software Features (continued)

Protected Ports

Ensure no exchange of unicast, broadcast, or multicast traffic between the protected ports on the switch, therefore, improve the security of your converged network where your sensitive phone conversation can stay private and your surveillance video clips can be forwarded to their designated storage device without leakage or alteration.

Dynamic ARP Inspection

Prevents a class of man-in-the-middle attacks, where an unfriendly station intercepts traffic for other stations by poisoning the ARP caches of its unsuspecting neighbors.

Multicast VLAN Registration

Eliminates the replication of the same multicast traffic for every VLAN by sending multicast traffic only on to the dedicated multicast/source VLAN, resulting in more efficient utilization of network bandwidth.

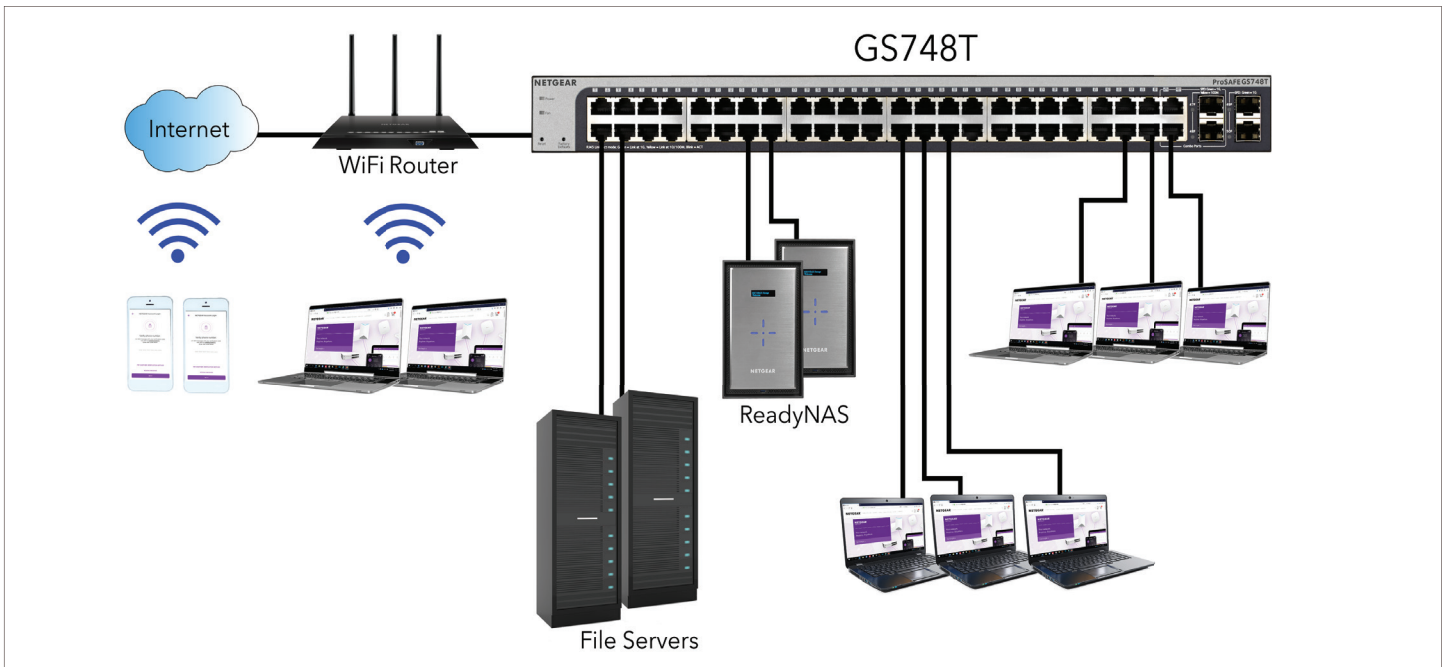
EAV (Ethernet Audio/Video Bridging) Support¹

Extends Ethernet usage to support multimedia streaming. The Ethernet AVB standard adds QoS (Quality of Service) features like time-synchronized low latency streaming services and bandwidth reservation to make it possible to carry professional quantity audio and video signals on a standard Ethernet line.

¹ EAV support can be acquired through the purchase of EAV software license that is sold separately from the switch. Please refer to ordering information for part numbers of these licenses.

Example Application

Converged Network Application



Why is the NETGEAR latest generation of Gigabit Smart Managed Switch the right choice for SMBs?

NETGEAR Gigabit Smart Managed Switches offer the best Return on your Investment:

- Well-staged for future network upgrade with Gigabit to desktop and network virtualization
- Cost-Effectively bring intelligence to the edge of the network with traffic management features from the Smart Managed Switches
- Improved usability for easier and smoother deployment of voice, video and WLAN on the same converged platform
- Limited Lifetime warranty and 1-year free Advanced Tech Support for peace-of-mind

A New Generation of Gigabit Smart Managed Switches

Technical Specifications	GS716Tv3	GS724Tv4	GS748Tv5
Interfaces	16 10/100/1000 Mbps auto-sensing Gigabit-Ethernet switching ports, and two dedicated 1000M SFP fiber ports.	24 10/100/1000 Mbps auto-sensing Gigabit-Ethernet switching ports, and two dedicated 1000M SFP fiber ports.	48 10/100/1000 Mbps auto-sensing Gigabit-Ethernet switching ports, and two dedicated 1000Mbps SFP fiber ports, and two combo 1000Mbps SFP fiber ports.
Performance Specification			
Forwarding modes	Store-and-forward		
Bandwidth	36 Gbps	52 Gbps	100 Gbps
Priority queues	8	8	8
Priority queuing	Weighted Round Robin (WRR)		
MAC Address database size	16k media access control (MAC) addresses		
Addressing	48-bit MAC address		
Multicast groups	512		
Number of static routes	32		
Number of routed VLANs	15		
Number of ARP Cache entries	512		
Number of DHCP snooping bindings	8K		
Number of DHCP static entries	1024		
ACL	100 shared for MAC, IP and IPv6 ACLs		
Jumbo frame support	up to 9K packet size		
Acoustic noise (ANSI-S10.12)	0 dBA	0 dBA	37.2 dBA
Mean Time Between Failures (MTBF)	726,612 hours	567,680 hours	390,728 hours
L2 Services - VLANs			
IEEE 802.1Q VLAN Tagging	Yes		
Protocol based VLANs	Yes		
MAC based VLANs	Yes		
Voice VLAN	Based on phones OUI bytes (internal database, or user-maintained) or protocols (SIP, H323 and SCCP)		
Protocol-based VLAN	Yes		
Network Security			
IEEE 802.1x	Yes		
Guest VLAN	Yes		
RADIUS based VLAN assignment via .1x	Yes		
MAC-based .1x	Yes		

Network Security	GS716Tv3	GS724Tv4	GS748Tv5
RADIUS Accounting		Yes	
Network Storm Protection, DoS		Yes	
Broadcast, Unicast, Multicast DoS Protection		Yes	
DoS Attacks		Yes	
Dynamic ARP inspection		Yes	
L2 Services - Availability			
IEEE 802.3ad - LAGs		Yes	
LACP	Yes (26 LAGS with max. of 8 members in each LAG)		
Broadcast Storm Control		Yes	
IEEE 802.3x (Full Duplex and flow control)		Yes	
IEEE 802.1D Spanning Tree Protocol		Yes	
IEEE 802.1w Rapid Spanning Tree		Yes	
IEEE 802.1s Multiple Spanning Tree		Yes	
L2 Services - Multicast Filtering			
IGMP Snooping (v1, v2 and v3)		Yes	
MLD Snooping Support (v1 and v2)		Yes	
IGMP Snooping Queries		Yes	
Block Unknown Multicast		Yes	
Multicast VLAN Registration		Yes	
L3 Services - DHCP			
DHCP Client		Yes	
DHCP Snooping		Yes	
L3 Services - IPv4 Routing			
Static Routing		Yes	
VLAN Routing		Yes	
IP Source Guard		Yes	
Network Monitoring and Discovery Services			
802.1ab LLDP		Yes	
SNMP		v1, v2c, v3	
RMON 1,2,3,9		Yes	
Network Traffic			
Access Control Lists (ACLs)		L2 / L3 / L4	
IP-based ACLs (IPv4 and IPv6)		Yes	
MAC-based ACL		Yes	
TCP/UDP-based ACL		Yes	

A New Generation of Gigabit Smart Managed Switches

Network Traffic	GS716Tv3	GS724Tv4	GS748Tv5
MAC lockdown		Yes	
MAC lockdown by the number of MACs		Yes	
IEEE 802.1x Radius Port Access Authentication		Yes	
Port-based security by locked MAC addresses		Yes	
Dynamic VLAN Assignment		Yes	
Dynamic ARP inspection		Yes	
Quality of Service (QoS)			
Access Lists		Yes	
L2 MAC, L3 IP and L4 Port ACLs		Yes	
Ingress rate limiting		Yes	
Egress rate limiting		Yes	
Support for IPv6 fields		Yes	
DiffServ QoS		Yes	
IEEE 802.1p COS		Yes	
Dst MAC and IP		Yes	
IPv4 and v6 DSCP		Yes	
IPv4 and v6 TOS		Yes	
WRR (Weighted Round Robin)		Yes	
Strict Priority Queue Technology		Yes	
Timing and Synchronization for Time-Sensitive Applications (IEEE802.1AS)		Yes ¹	
Stream Reservation Protocol (SRP) (IEEE802.1Qat)		Yes ¹	
Forwarding and Queuing for Time-Sensitive Streams (IEEE802.1Qav)		Yes ¹ (up to 24 ports simultaneously)	
Audio Video Bridging Systems (IEEE802.1BA)		Yes ¹	
Auto-VoIP	Yes, based on protocols (SIP, H323 and SCCP) or on OUI bytes (default database and user-based OUIs) in the phone source MAC address		
Auto Video		Yes	
Port Mirroring		Yes	

¹ Requires EAV support which can be acquired through the purchase of EAV software license that is sold separately from the switch. Please refer to ordering information for part numbers of these licenses.

A New Generation of Gigabit Smart Managed Switches

IEEE Network Protocols	GS716Tv3	GS724Tv4	GS748Tv5
<ul style="list-style-type: none"> • IEEE 802.3 Ethernet • IEEE 802.3i 10BASE-T • IEEE 802.3u 100BASE-T • IEEE 802.3ab 1000BASE-T • IEEE 802.1Q VLAN Tagging • IEEE 802.3x Full-Duplex Flow Control • IEEE 802.1Qav¹ • IEEE 802.3z Gigabit Ethernet 1000BASE-SX/LX • IEEE 802.3ae 10-Gigabit Ethernet • IEEE 802.3ad Trunking (LACP) 	<ul style="list-style-type: none"> • IEEE 802.1AB LLDP with ANSI/TIA-1057 (LLDP-MED) • IEEE 802.1p Class of Service • IEEE 802.1Qat1 • IEEE 802.1D Spanning Tree (STP) • IEEE 802.1s Multiple Spanning Tree (MSTP) • IEEE 802.1w Rapid Spanning Tree (RSTP) • IEEE 802.1x Radius network access control • IEEE 802.1BA1 • IEEE 802.1AS1 		
Management			
Password Management		Yes	
Configurable Management VLAN		Yes	
Admin Access Control via Radius and TACACS+		Yes	
Web-based Graphical User Interface (GUI)		Yes	
Smart Control Center (SCC) for Multi-switch Management		Yes	
IPv6 Management		Yes	
Dual Software (firmware) Image		Yes	
Dual Configuration File		Yes	
SNTP Client over UDP Port 123		Yes	
SNMP v1/v2C		Yes	
SNMP v3 with Multiple IP Addresses		Yes	
RMON 1,2,3,9		Yes	
Port Mirroring		Yes	
Many to One Port Mirroring		Yes	
Cable Test Utility		Yes	
SSL/HTTPS and TLS v1.0 for Web-based access		Yes	
File Transfers (uploads, downloads)		TFTP / HTTP	
HTTP Download (firmware)		Yes	
Syslog (RFC 3164)		Yes	
LEDs			
Per Port		Speed, Link, Activity	
Per Device		Power and Fan (GS748T only)	
Physical Specifications			
Weight (kg)	2.57kg	2.74kg	3.46kg
Dimensions (WxDxH) mm	440 x 204 x 43mm	440 x 204 x 43mm	440 x 257 x 43mm

¹ The feature can be acquired through the purchase of EAV software license that is sold separately from the switch. Please refer to ordering information for part numbers of these licenses.

Power Consumption (when all ports used, line-rate traffic and max PoE if applicable)	GS716Tv3	GS724Tv4	GS748Tv5
WorstCase, all ports used, line-rate traffic	14.4W	17.4W	41.1W
Environmental Specifications			
Operating			
Operating Temperature	32° to 122°F (0° to 50°C)		
Humidity	90% maximum relative humidity, non-condensing		
Altitude	10,000 ft (3,000 m) maximum		
Storage			
Storage Temperature	- 4° to 158°F (-20° to 70°C)		
Humidity (relative)	95% maximum relative humidity, non-condensing		
Altitude	10,000 ft (3,000 m) maximum		
Electromagnetic Emissions and Immunity			
Certifications	CE mark, commercial FCC Part 15 Class A, VCCI Class A Class A EN 55022 (CISPR 22) Class A Class A RCM EN 50082-1 EN 55024 CCC		
Safety			
Certifications	CE mark, commercial CSA certified (CSA 22.2 #950) UL listed (UL 1950)/cUL IEC 950/EN 60950		
Warranty and Support			
Limited Lifetime Warranty*	Included		
Lifetime 24x7 online Technical Support*	Included		
Lifetime Next-Business-Day (NBD) Replacement	Included		
ProSUPPORT OnCall 24x7**	Category S2 PMB0S12 (1 yr) PMB0S32 (3 yr) PMB0S52 (5 yr)	Category 1 PMB0311 (1 yr) PMB0331 (3 yr) PMB0351 (5 yr)	Category 1 PMB0311 (1 yr) PMB0331 (3 yr) PMB0351 (5 yr)
Package Contents			
All models	Gigabit Smart Managed Switch Power cord Rack mount kit Installation guide		
Ordering Information			
GS716T-300NAS	North America and Latin America		

A New Generation of Gigabit Smart Managed Switches

GS716T-300EUS	Europe
GS716T-300AJS	Asia
GS724T-400NAS	North America and Latin America
GS724T-400EUS	Europe
GS724T-400AJS	Asia
GS724T-400PRS	China
GS748T-500NAS	North America and Latin America
GS748T-500EUS	Europe
GS748T-500AJS	Asia
GS748T-500PRS	China
Optional Modules, Software License and Accessories	
GS716TAV-20000S	Ethernet Audio/Video (EAV) software license for GS716T-300
GS724TAV-20000S	Ethernet Audio/Video (EAV) software license for GS724T-400
GS748TAV-20000S	Ethernet Audio/Video (EAV) software license for GS748T-500
AGM731F	1000Base-SX SFP GBIC (Multimode)
AGM732F	1000Base-LX SFP GBIC (Single mode)
AGM734-10000S	SFP Transceiver 1000BASE-T Copper RJ45 GBIC
AFM735-10000S (GS748T only, for combo port only)	100Base-FX SFP LC GBIC

*This product comes with a limited warranty that is valid only if purchased from a NETGEAR authorized reseller, and covers unmodified hardware, fans and internal power supplies - not software or external power supplies, and requires product registration at <https://www.netgear.com/business/registration> within 90 days of purchase; see <https://www.netgear.com/about/warranty> for details. Intended for indoor use only.

**The NETGEAR OnCall 24x7 contract provides unlimited phone, chat and email technical support for your networking product.

† NETGEAR #1 in US Market Share according to NPD data for Unmanaged and Smart Switches, January 2019. NETGEAR #1 in Europe Market Share according to Context data for Unmanaged and Smart Switches, January 2019.

NETGEAR, the NETGEAR Logo, and NETGEAR Insight are trademarks of NETGEAR, Inc. in the United States and/or other countries. Other brand names mentioned herein are for identification purposes only and may be trademarks of their respective holder(s).

NETGEAR, Inc. 350 E. Plumeria Drive, San Jose, CA 95134-1911 USA, 1-888-NETGEAR (638-4327), E-mail: info@NETGEAR.com, www.NETGEAR.com

DS-GS716Tv3, GS724Tv4 and GS748Tv5-13Aug19