

16-port Fast Ethernet PoE Switch with 2-port Gigabit Uplink

User's Manual

FCC Warning

This device has been tested and found to comply with limits for a Class A digital device, pursuant to Part 15 of FCC Rules. These limits are designed to provide reasonable protection against harmful interference when the equipment is operated in a commercial environment. This equipment generates and radiates radio frequency energy and, if not installed and used in accordance with the user's manual, it may cause interference in which case users will be required to correct interference at their own expenses.

CE Warning

This is a Class A product. In a domestic environment, this product may cause radio interference in which case the user may be required to take adequate measures.

Introduction

This switch provides 16 10/100M and 2 10/100/1000M combo ports. It was designed for easy installation and high performance in an environment where traffic is on the network and the number of users increases continuously.

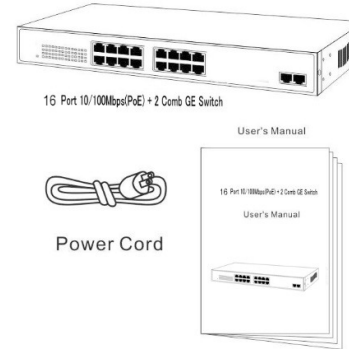
The 16 Fast Ethernet PoE ports are with PSE function to provide power to the connected networking device. The 2 Gigabit COMBO ports are equipped with 2 RJ45 connectors plus 2 mini-GBIC connectors at the back panel for fiber connection. The combo port will auto detect if the mini-GBIC or the RJ45 connector is in connect. This solves the limitation of the power outlet location and offers a flexible solution to locate the network device everywhere.

The rack-mount size was specifically designed for medium to large workgroups. The Switch can be installed where space is limited; moreover it provides smooth network migration and easy upgrade to network capacity. The 19" size can be rack-mount on 19" cabinet.

Package Contents

Before you start to install this switch, please verify your package that contains the following items:

- One PoE Fast Ethernet Switch
- One Power Cord
- One User's Manual



Note: If any of these items is found missing or damaged, please contact your local supplier for replacement.

Key Features

- 16 Ports 10/100M + 2 Combo ports of 10/100/1000M Nway (Auto-negotiation) Switch
- 16 IEEE 802.3af PSE/PoE function ports
- Supporting 15.4W (Max) power for each PSE/PoE port
- 19" rack-mount size
- Auto-learn of networking configurations
- Auto-detect full/half-duplex modes for any port
- Dedicated full-duplex 200Mbps bandwidth
- Store-and-Forward switching methods
- IEEE 802.3x flow control for full-duplex and back-pressure flow control for half-duplex
- Non-blocking & Non-head-of-line blocking full wire speed forwarding
- Auto-MDI/MDI-X function for any port
- Smart plug & play

Front Panel (LEDs)

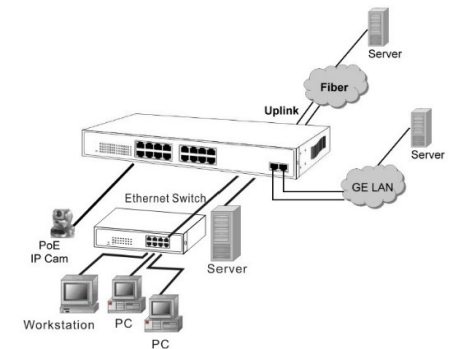
LED Indicators of 16 Ports PoE 10/100M and 2 ports GE Switch

LED	Status	Description
Power	On	Power on.
	Off	Power off.
LINK 1~16	On	Port in connection.
	Flashing	Data Activity
	OFF	No Connection
PoE 1~16	On	PoE is On.
	Off	PoE is off.
LINK 17~18	On	Port in connection.
	Flashing	Data Activity
	Off	No Connection
GE 17~18	On	Gigabit in connection
	Flashing	10/100M in connection.
	Off	No connection.

Connections

16 Port PoE 10/100M Switch & 2 GE Combo ports (UTP/mini-GBIC) for Uplink

This switch provides automatic crossover detection functionality for any port. It is simple and easy to up-link to another switch without crossover cable.

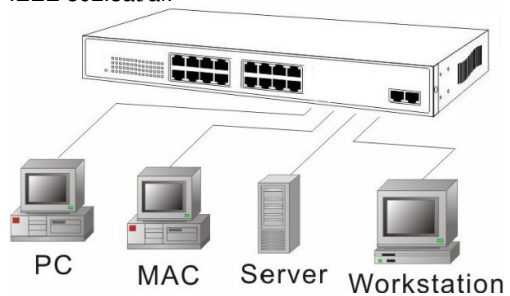


PC/Other devices to this 16 Ports Fast Ethernet Switch

Via a twisted pair cable straight through, this switch can be connected to PCs, servers and other network devices.

Power Device to this 16 Port PoE Fast Ethernet Switch and getting 48V power source through Cat. 5 cables

Using Cat. 5 twisted-pair cable to connect Power Device to the port 1~16 of this switch, and then this switch will supply 56V power to Power Device over Cat. 5 twisted-pair cable. Please be noted Power Device should also comply with IEEE 802.3at/af.



Rear Panel (Power)

AC input

AC input (100~240V/AC, 50~60Hz)



Technical Specifications

Standards	IEEE 802.3af/at IEEE 802.3 10BaseT IEEE 802.3u 100BaseTX IEEE 802.3ab 1000Base-T IEEE 802.3z 1000Base-LX/SX
Features	Number of PoE Ports: 16 Number of GE Ports: 2 Number of mini-GBIC slots: 2 for fiber extension MAC Address: 4K Buffer Memory: 512kbyte Method: Store and Forward
Filtering/ Forwarding Rates	1000Mbps port – 1,480kpps 100Mbps port – 148,800pps 10Mbps – 14,880pps
Transmission Media	10BaseT Cat. 3, 4, 5 UTP/STP 100BaseTX Cat. 5 UTP/STP
LED Indicators	Per Port: LINK, PoE GE Port: LINK, GE Per Unit: Power
Power Input	100~240V/AC, 50~60Hz
Power Output	56V/DC Per Port Output – 15.4 W Max Per Port 16 Ports at Full 15.4 W Output Supported
Power Consumption	250 Watts
Dimensions	440 x 200 x 44 mm (L x W x H)
Weight	3.5 kg
Operating Temperature	0 to 40°C
Storage Temperature	-20 to 90°C
Humidity	10 to 90% RH (non-condensing)
Certifications	FCC Class A, CE